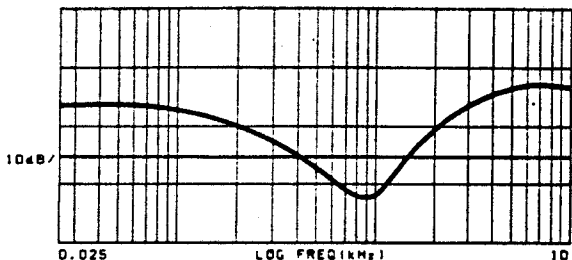




EMG PICKUPS

INSTALLATION INFORMATION MODEL EXB

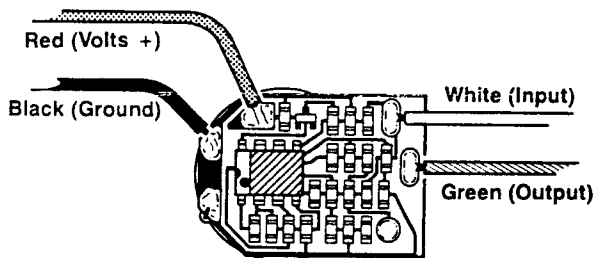
The EMG-EXB is an active tone circuit for bass. It boosts the low and high frequencies while cutting the mids. With the control completely counterclockwise, it is bypassed. The amount of effect can be varied from minimum to maximum by rotating the pot clockwise. The graph to the right shows the effect with the control all the way up.



SPECIFICATIONS:

• EXB

| | |
|-------------------------------|-------|
| Noise (dBV) | - 112 |
| Output Impedance (Kohm) | 2 |
| Current (Microamps) | 400 |
| Battery Life (Hours) | 1250 |



GENERAL INSTALLATION NOTES:

- 1) Only one battery is required per instrument. Additional active components such as the EXB, BTC, BTS, PI-2, PA-2, etc. do not require an additional battery.
- 2) Use an alkaline battery, MN1604 or similar, for longest life.
- 3) The original EMG wiring must be altered. This is assuming that you already have EMG pickups in your in-

strument. If you are installing pickups along with an EQ circuit, please read both sets of instructions before you start. This should save you some steps.

- 4) If your installation is different from the diagrams in these instructions and you need additional diagrams, call or write to us. It is highly possible another EMG Installation Sheet will have the diagram you require.

WARRANTY:

All EMG Pickups and accessories are warranted for a period of two years. This warranty does not cover failure due to improper installation, abuse or damage. Interface electronics (controls, etc.) are not covered under this warranty. If at any time a pickup fails to work, return it postage pre-paid with proof of purchase. If upon examination the pickup is determined to be defective, a replacement will be made at no charge. Warranty replacement products are covered by this same warranty. This warranty covers only those pickups and accessories sold by authorized EMG Dealers. This warranty is not transferable.



EMG
PO BOX 4394
SANTA ROSA, CALIF.
95402 U.S.A.
(707) 525-9941

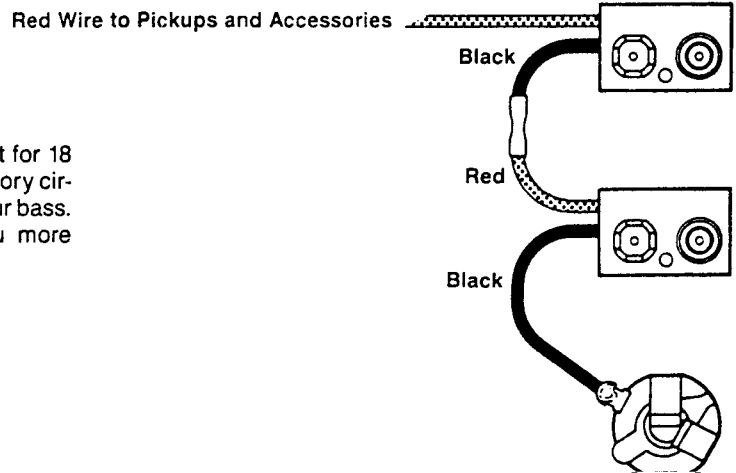
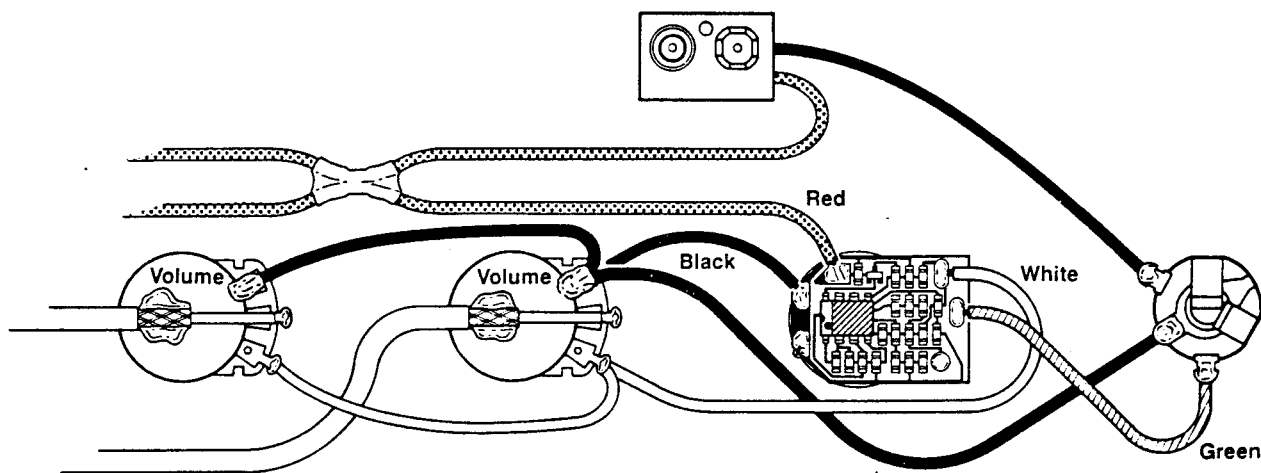
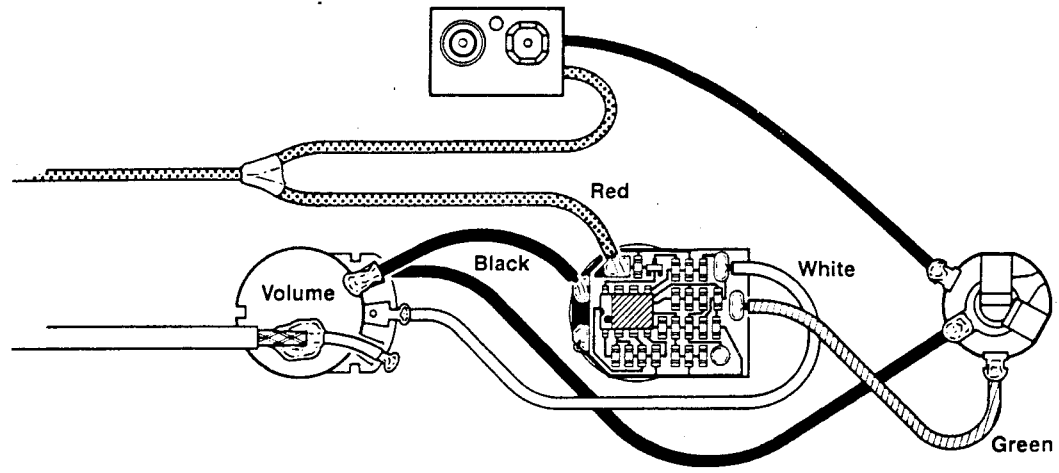
Installation Instructions for the EXB

- 1) Remove the tone control and its capacitor.
- 2) Remove the white output wire connected between the volume control and the jack (tip).
- 3) Install the EXB into the instrument.
- 4) Connect the white wire (input) of the EXB to the volume control as shown in the diagram.
- 5) Connect the green wire (output) of the EXB to the jack (tip) as shown in the diagram.
- 6) Connect the black wire (ground) of the EXB to the case of the volume control as shown in the diagram.
- 7) Make sure there is a ground wire connected between

the center solder lug on the jack (ring) and the case of a control as shown in the diagram. Also make sure the cases of all the controls are connected to ground as shown in the diagram (black wires).

- 8) Connect the red wire of the EXB together with the red wires from the pickups and battery clip. Cover this connection with heat shrink tubing.

This completes the installation. If you have any problems, contact the factory at the number provided on the front page of these instructions. Service is readily available.



18 Volt Wiring Option

Here is a diagram of how to wire your instrument for 18 volts. If you experience distortion with the accessory circuit turned all the way up, use 18 volts to power your bass. This won't increase output but it will give you more headroom.