

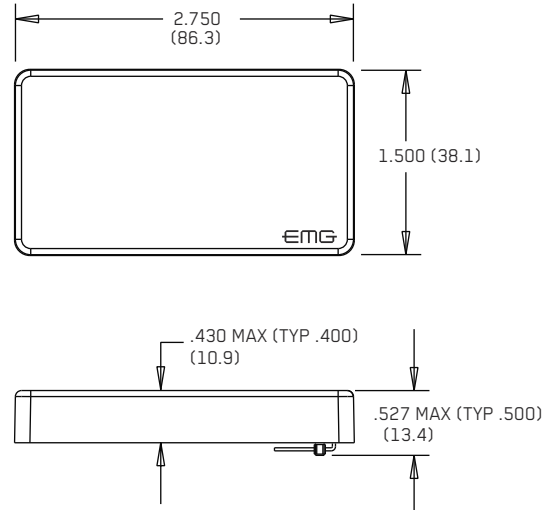


0230-XXXX

PO BOX 4394
SANTA ROSA, CA
95402 USA

P (707) 525-9941
F (707) 575-7046
EMGPICKUPS.COM

INSTALLATION INFORMATION EMG MODELS: **EMG-91 ARCHTOP**



SPECIFICATIONS:

Logo Color
Magnet Type
Resonant Frequency (KHz)
Output Voltage (String)
Output Voltage (Strum)
Output Noise (60 Hz)
Output Impedance (Kohm)
Current @9V (Microamps)
Battery Life (Hours)
Maximum Supply (Volts DC)

MODEL:

EMG-91
Silver
Ceramic
4.05
1.00
3.00
-101
3
650
800
27

ABOUT THE EMG-91 ARCHTOP PICKUP:

There are several benefits to using an active pickup for an arch top. Firstly, the pickup can be designed for great tone because output level is not an issue. In addition, the EMG design insures the pickup is virtually noiseless and doesn't need string grounding. It is almost impossible to ground the strings of an arch-top guitar, so the pickup needs to be noiseless in its design.

The 91 is our original archtop pickup.

String Compensation (B and E)

The 91 Model has compensation for plain B and E strings so they balance well with the wound strings.

Be sure you mount the pickup as shown with the EMG Logo in the bottom right hand corner. Otherwise....

Mounting:

Because all arch-top guitars are different, mounting the pickup is usually unique in most cases.

The pickup can be mounted on its bottom surface to a pickguard, or can be mounted with the EMG-91 bracket kit.

Page 3 of this data sheet has the diagram and dimensions of the 91 bracket.

Power:

The EMG-91 needs to be powered by a 9 Volt battery. This can be accomplished by putting a battery holder in the instrument, or using the EMG ES-9/18 external Power Supply with a stereo cable from the instrument to the battery box and a patch cable from the battery box to the amp.

Volume and Tone Controls:

Again, with Archtop instruments Volume and Tone controls are the users choice. Diagrams enclosed show the installation using separate controls. As an option you can use the B-46-A EMG Archtop Volume and Tone Controls , a low-profile thumbwheel Volume and Tone control set.

Diagrams and dimensions of the B46-A Controls are on page 3.

WARRANTY

All EMG Pickups and accessories are warranted for a period of two years. This warranty does not cover failure due to improper installation, abuse or damage. If upon examination the pickup is determined to be defective, a replacement will be made. Warranty replacement products are covered by this same warranty. This warranty covers only those pickups and accessories sold by authorized EMG Dealers. This warranty is not transferable.

Installation Instructions:

EMG Models: EMG-91 Archtop Pickup

Installation (One Pickup Guitars):

- 1) The Pickup cable is a ribbon style with a 3 pin housing.
The GRAY wire goes to V+ (9V). If you are using the B46 Archtop Volume and Tone control System make sure the GRAY wire goes to the RED input on the PC Board.

Master Volume and Tone control

- 2) Refer to diagram #2. Plug the Pickup cable onto the Volume control as shown. Plug a coax cable from the Volume control to the Tone control. Plug the output cable onto the tone control as shown.
- 3) Connect the wires of the output cable to the output jack by pushing the connectors on as shown.
WHITE wire to the TIP (T) contact,
BLACK wire to the SLEEVE (S) contact
BLACK Battery Negative wire to the RING (R) contact.
- 4) Insert the GRAY wire with the RED Stripe into the battery buss along with the RED wire from the battery.
- 5) Put the battery wherever convenient.

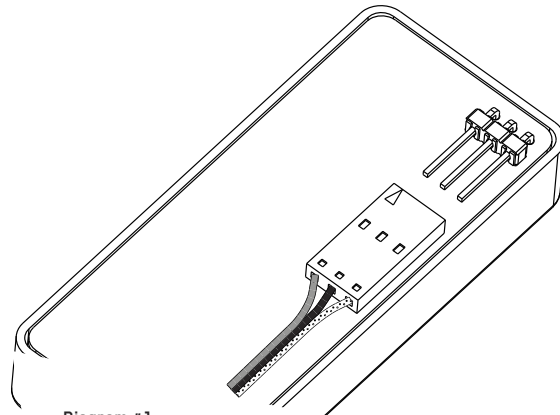


Diagram #1
Connect the cable as shown.

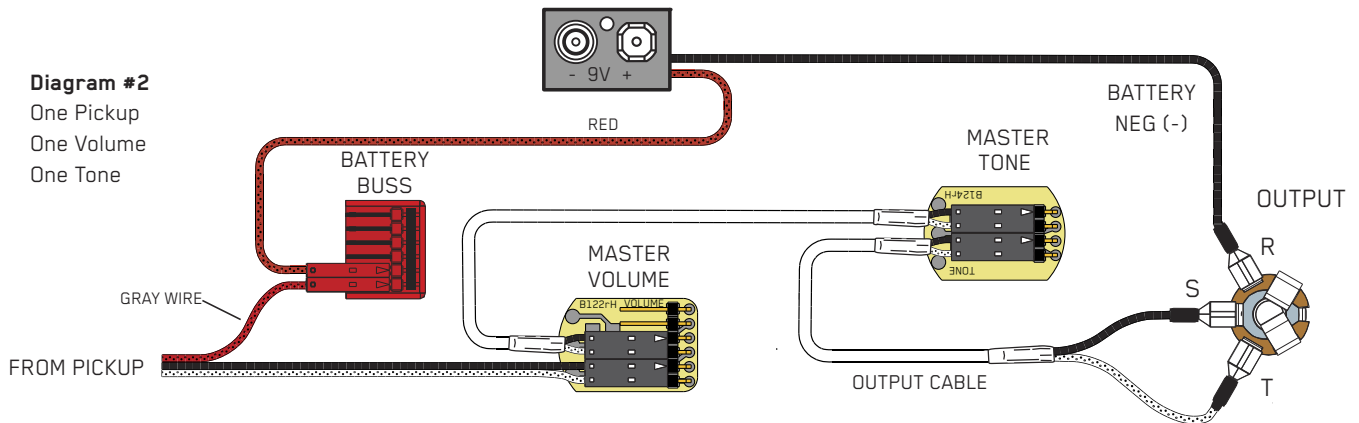


Diagram #2
One Pickup
One Volume
One Tone

Diagram #3

Internal Battery with the 152B Panel Jack:

If your instrument has a long Panel Jack like the one below you will have to solder the output cable as shown.
Ground (Black) to the Sleeve
Signal (White) to the Tip
Battery Negative (Black) to the Ring

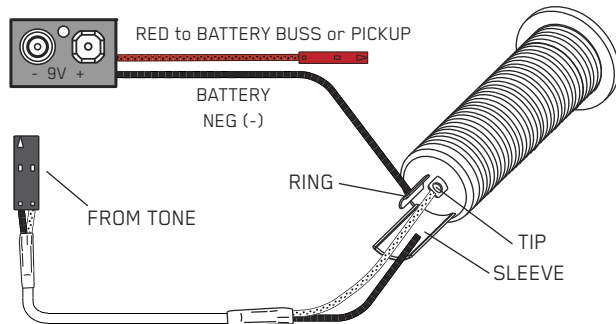
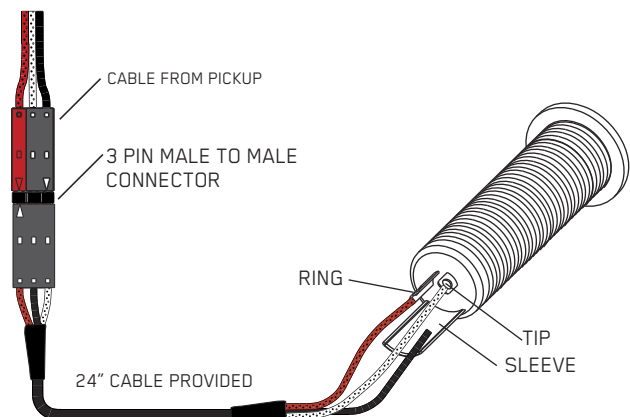


Diagram #4

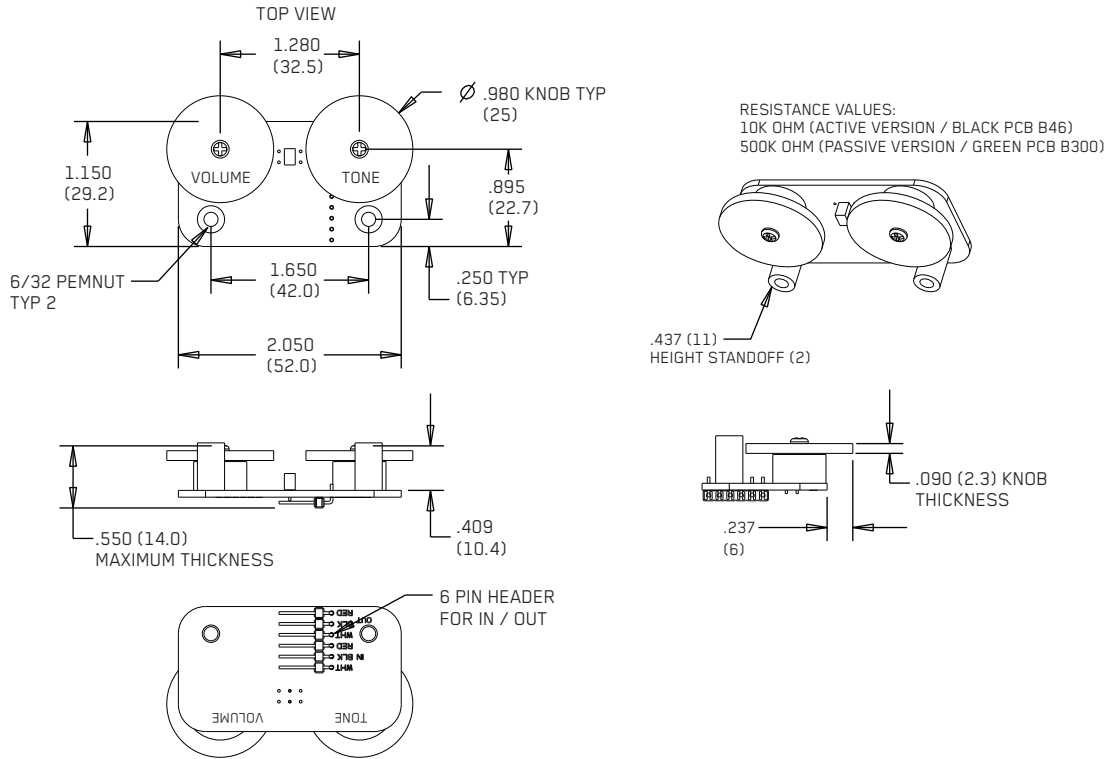
ES 9/18 EMG External Battery Box without V and T

You can use the 24" cable provided to send the pickup output directly to the output jack. The ES 9/18 Power Supply with a Stereo cable will send +9 or +18 Volts up the ring contact to the pickup. Wire as shown.
Ground (Black or Shield) to the Sleeve
Signal (White) to the Tip
Battery Positive (RED) to the Ring



B46-A and B300 Volume and Tone Controls:

Shown below is the layout for both the B46-A and B300 Volume and Tone Set. The full instructions are available on the website: www.emgpickups.com.



Mounting with the EMG-91 Mounting Bracket Kit:

Because all arch-top guitars are different, mounting the pickup is usually unique in most cases. Below is the EMG-91 Bracket and it's associated dimensions.

