



SPECIFICATIONS

Output Impedance @ 1K Hz

AT93 530KOhm

AT125 400KOhm

Installation Information:

EMG Model: EMG-AT93U, EMG-AT125U with Ultrajak

- 1) We recommend that this installation be done by a qualified instrument repair person. Special tools and skills are required.
- 2) Before beginning the installation procedure it is important to verify that you have the right pickup for your guitar. Measure the length and width of the saddle with a caliper. The length of the saddle must be at least 2.75" (70mm). If the width is .115" (2.9mm) or less, use the EMG-AS93. If the width is greater than .115" (2.9mm) use the EMG-AS125.
- 3) DO NOT attempt to modify the pickup by sanding or trimming. This will ruin the pickup and void the warranty.
- 4) The EMG transducer uses piezo film rather than crystals. The film runs almost the entire length of the pickup with a void at the very end near the cable. Center the "pickup area" under the strings. See Figure 1 for details.

Ultrajak Installation

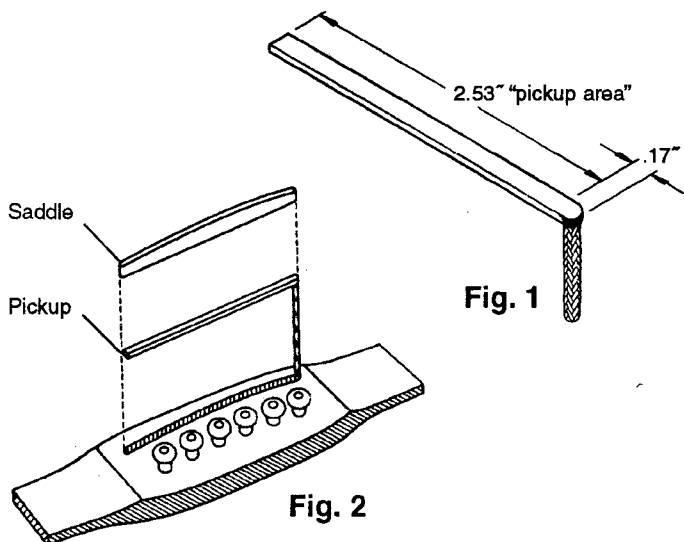
A 1/2" hole in the end block is required for the installation of the Ultrajak. It is highly recommended that this hole be drilled by a person with the appropriate tools and skill to maintain the finish of your instrument.

Tools required:

Electric Drill, 3/32 drill
1/2 inch Brad point drill bit
1/16", Allen wrench (included)

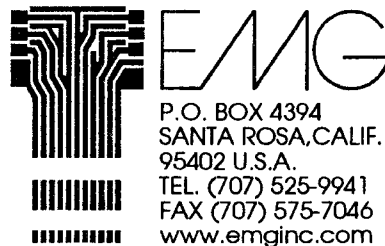
Acoustic Pickup Installation Instructions

- 1) Remove the strings and the saddle from the bridge.
- 2) Drill a 3/32" hole in the high "E" string end of the saddle slot so that "pickup area" is aligned as well as possible under the strings. See installation note 4 and Figure 1 for details.
- 3) Before modifying the saddle, make sure the pickup and the cable fit easily into the slot. If not, DO NOT FORCE IT. This can ruin the pickup. If it doesn't fit, you will have to modify the saddle slot and make a new saddle. If the pickup fits fine, then remove .050" (1.3mm) from the bottom of the saddle (minus the thickness of any shims there might be under the saddle). Make sure that the bottom of the saddle is perfectly FLAT.
- 4) Refer to Figure 2. Route the pickup wire through the hole in the bridge slot and set the pickup into the slot.



Warranty:

All EMG Pickups and accessories are warranted for a period of two years. This warranty does not cover failure due to improper installation, abuse or damage. If at any time a pickup fails to work, return it postage prepaid with proof of purchase. If upon examination the pickup is determined to be defective, a replacement will be made at no charge. Warranty replacement products are covered by this same warranty. This warranty covers only those pickups and accessories sold by authorized EMG Dealers. This warranty is not transferable.



P.O. BOX 4394
SANTA ROSA, CALIF.
95402 U.S.A.
TEL. (707) 525-9941
FAX (707) 575-7046
www.emginc.com

Ultrajak Installation:

- 1) If your instrument already has a strap button installed, remove it. Fill the strap button hole with a small piece of wood doweling to provide a solid/flat surface for the brad point drill. Then drill the 1/2" hole, the dowel will be drilled out. Remove the sawdust from the inside of the instrument.
- 2) Feed the pickup wire out the hole in the endblock. Refer to Figure 4, solder the inner white wire of pickup cable to the "TIP" terminal as shown, then solder the black jumper wire on the Ultrajak to the braid of the pickup cable.
- 3) Insert the 1/16" Allen wrench into the Ultrajak and rotate the screw counter-clockwise until the balls are flush with the outside of the housing (Figure 5a). Push the Ultrajak in flush to the guitar body (Figure 5b). Again, using the 1/16" Allen wrench, rotate the internal screw clockwise and this will tighten the Ultrajak firmly into the guitar (Figure 5c).

It's a good idea to test the guitar before you restring. Plug the guitar into an amp and test the installation, press down on the saddle and tap lightly on it with your finger, if things seem OK, restring the guitar and play away.

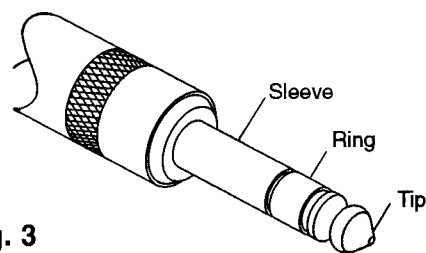


Fig. 3

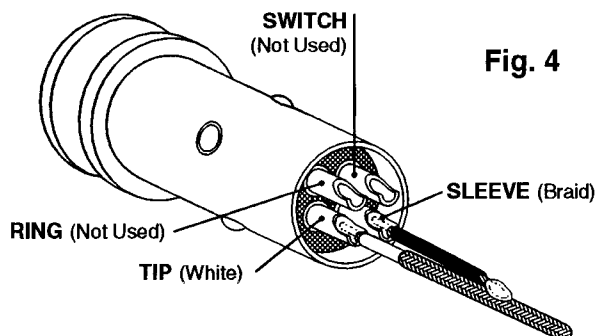


Fig. 4

Fig. 5B

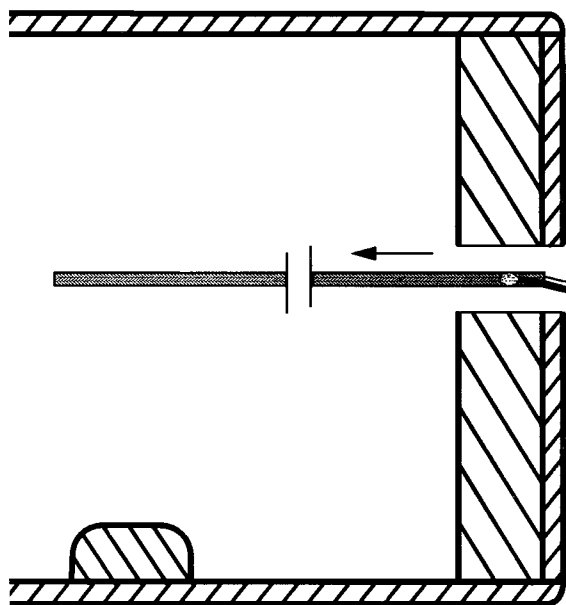


Fig. 5A

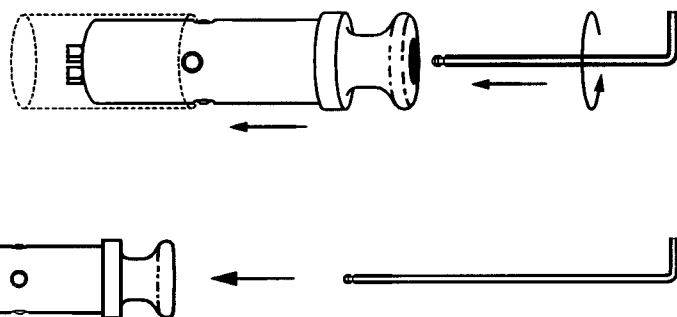
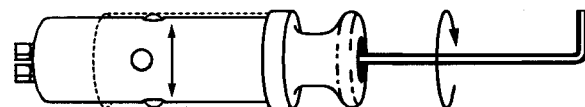


Fig. 5C



©EMG, Inc. 2001
All Rights Reserved